

July 2019

## Design Guidelines for Multi-stall All Gender Restrooms

### Overview:

In 2018 the Office of the University Architect (OUA) engaged an architect to assist in development of design guidelines for School and Centers interested in converting multi-stall gendered restrooms to multi-stall all gender restrooms. These guidelines were developed with input from the Provost's Office, LGBT Center, Division of Public Safety and Schools and Centers that participated in the study. We encourage Schools and Centers to include all gender facilities in new construction and major renovation projects when feasible.

### Process:

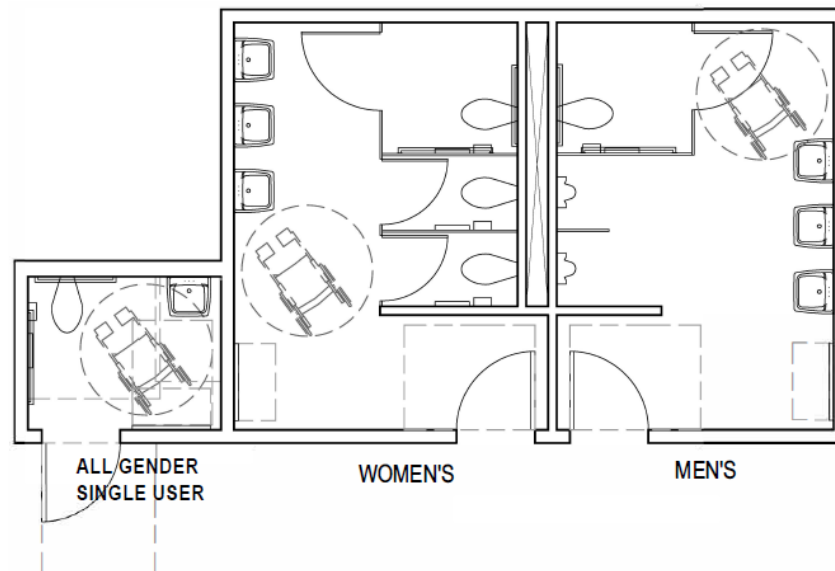
- Schools and Centers seeking to convert existing toilet rooms or construct new toilet facilities must obtain the approval and support of their respective senior leadership.
- A funding source for the project will need to be identified before modifications are designed and implemented.
- Contact FRES to initiate a request for a preliminary assessment by an architect in order to determine Building Code implications and identify the level of modification required. This first step is necessary to determine whether the project will be a Capital Project managed by FRES Design & Construction. Typically, conversions that include alterations to toilet or lavatory fixture counts or locations, or modifications to existing walls or doors, are required to follow the Capital Projects process.

### Design Guidelines:

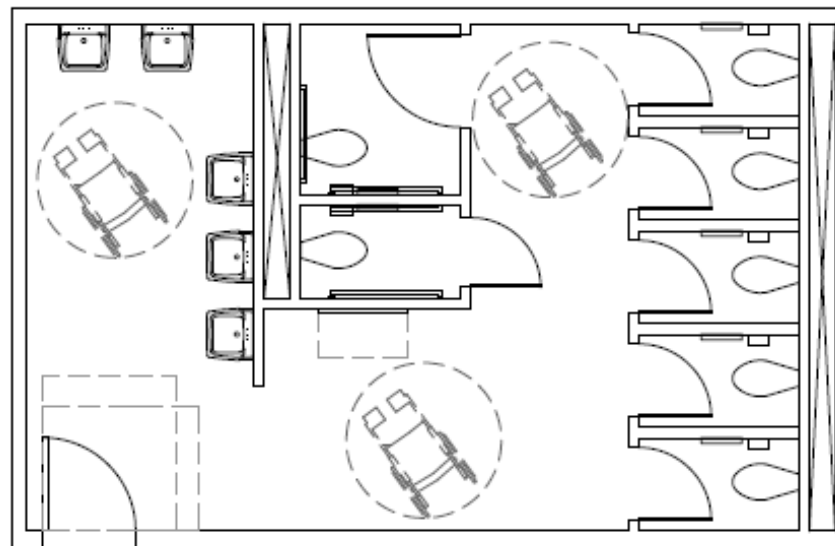
Listed below are desirable design characteristics for multi-stall all gender restrooms.

- Provide visual openness at entrance. If fire rating allows, consider translucent or transparent glazing for entry door.
- Provide generous circulation space at the sink area.
- Maximize privacy at stalls by using full height or minimum 8'-0" high partitions and doors extending from the floor. Fully enclosed stalls will require adequate lighting, and code compliant ventilation and fire protection.
- Provide code required fixture counts with toilets only (no urinals). A variance may be required.
- Provide occupancy indicator locks for each stall.
- A duress alarm is required in the common area. A second duress alarm is to be located within the ADA stall.
- The Office of the University Architect will review and approve all signage graphics. The room signage standard is "Restroom" for single user restrooms. The signage standard is "All Gender Restroom" for multi-user restrooms.

The first example below illustrates a set of gendered restrooms with an adjacent all gender single user restroom. The second example illustrates a prototypical all gender multi-stall restroom. Each example utilizes approximately the same total square foot.



**Gendered Restrooms with All Gender Single User Restroom**



**Prototypical Combined All Gender Multi-stall Restroom**

Space characteristics:

- Good visibility upon entry
- Generous circulation areas
- Full height partitions for privacy