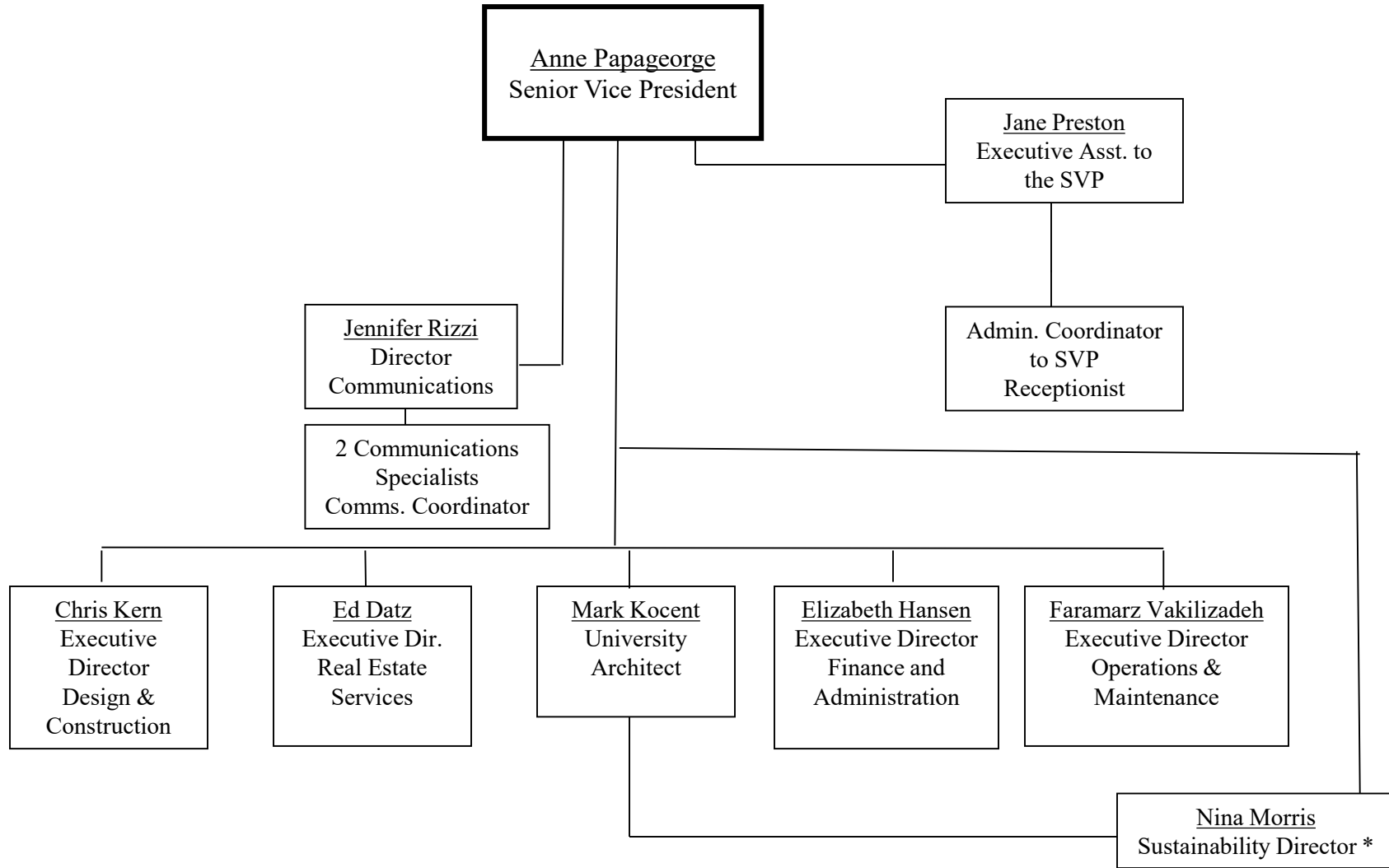


# Division of Facilities & Real Estate Services



\*Dual Reporting to FRES SVP and OUA

# Division of Facilities & Real Estate Services

Faramarz Vakilzadeh  
Executive Director  
Operations &  
Maintenance

Maria Jones  
Admin.  
Coordinator

James Bean  
Dir. Labor  
Relations

Wendy Sparks  
Director of  
Housekeeping

Walt Molishus  
Director of  
Trades

Ben Suplick  
Director  
Engineering &  
Energy  
Planning

Dana Pinckney  
Woodland  
Director

Harveen Kothari  
Locust  
Director

Betsy Robinson  
Dir. of Special  
Projects &  
Call Center

Admin. Coord.\*\*\*

FRES Mgr.  
FRES Coord.  
Third Party  
Vendor  
506 Housekeepers  
(Union)

5 Managers  
2 Project Managers  
21 Supervisors  
282 Trades  
Employees  
(Union)

1 Manager  
1 Energy Planner  
6 Engineers  
1 Associate  
1 FRF Database/  
Admin Coord.

10 Area Managers

1 Supervisor  
6 Customer  
Service Reps.  
Admin Coord.

Anita Hall  
Financial  
Manager \*\*

Financial  
Analyst

Christine Zalewski  
Dir. of Safety \*

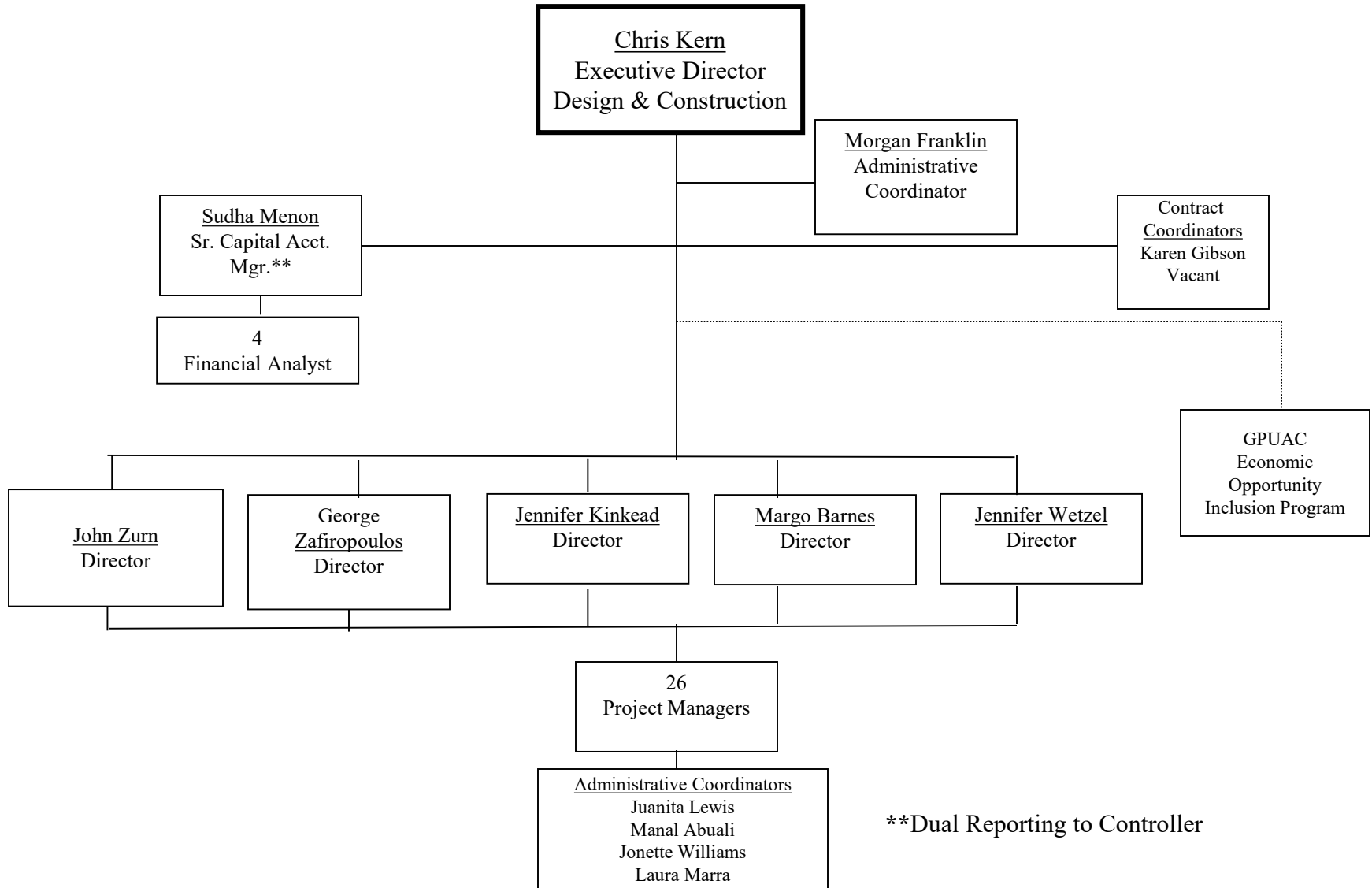


\* EHRs Employee assigned to FRES

\*\*Finance and Administration Employee assigned to O&M

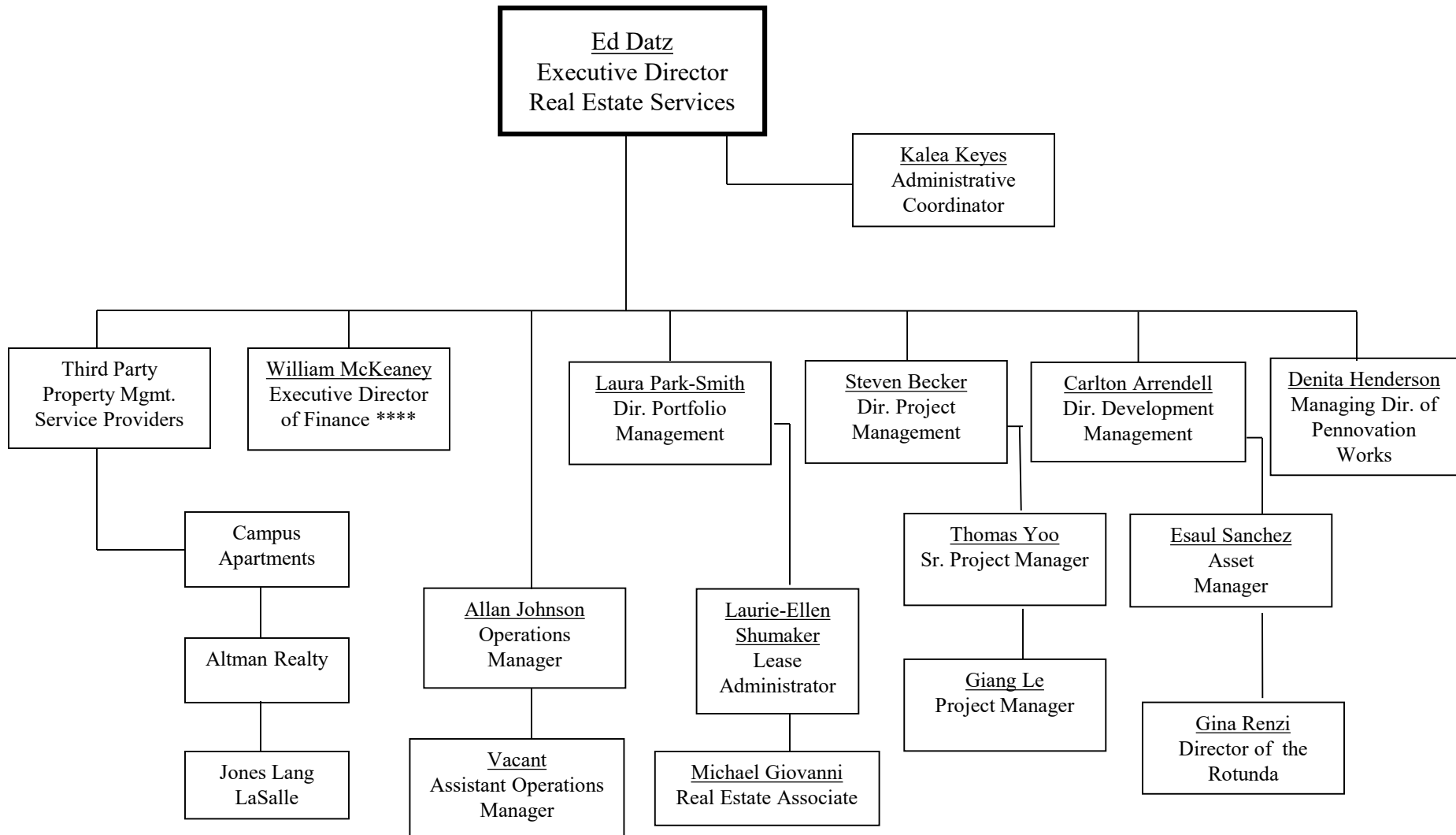
\*\*\*Supports both Director of Labor Relations and FRES HR

# Division of Facilities & Real Estate Services



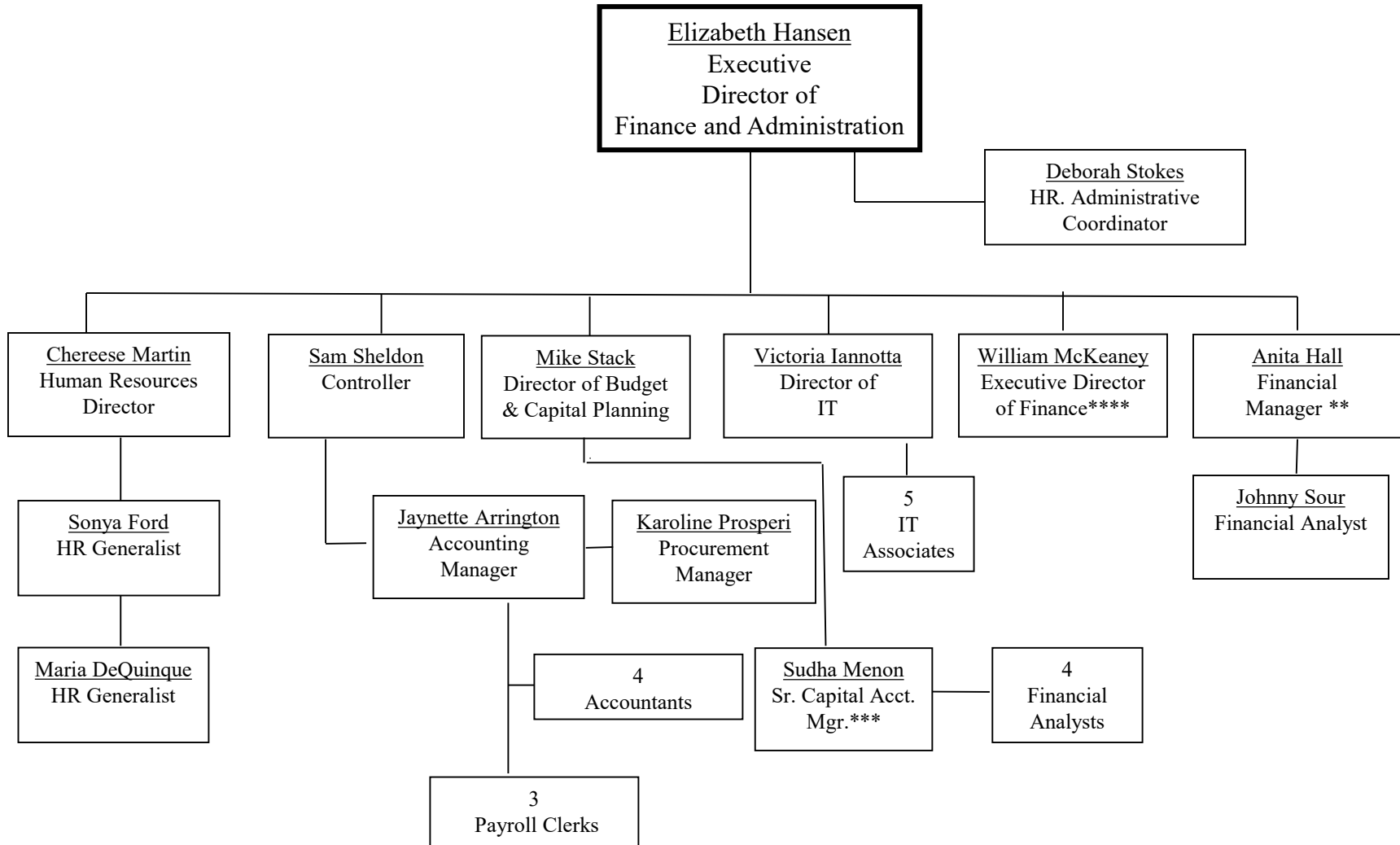
\*\*Dual Reporting to Controller

# Division of Facilities & Real Estate Services



\*\*\*\*Dual Reporting to Finance Administration

# Division of Facilities & Real Estate Services

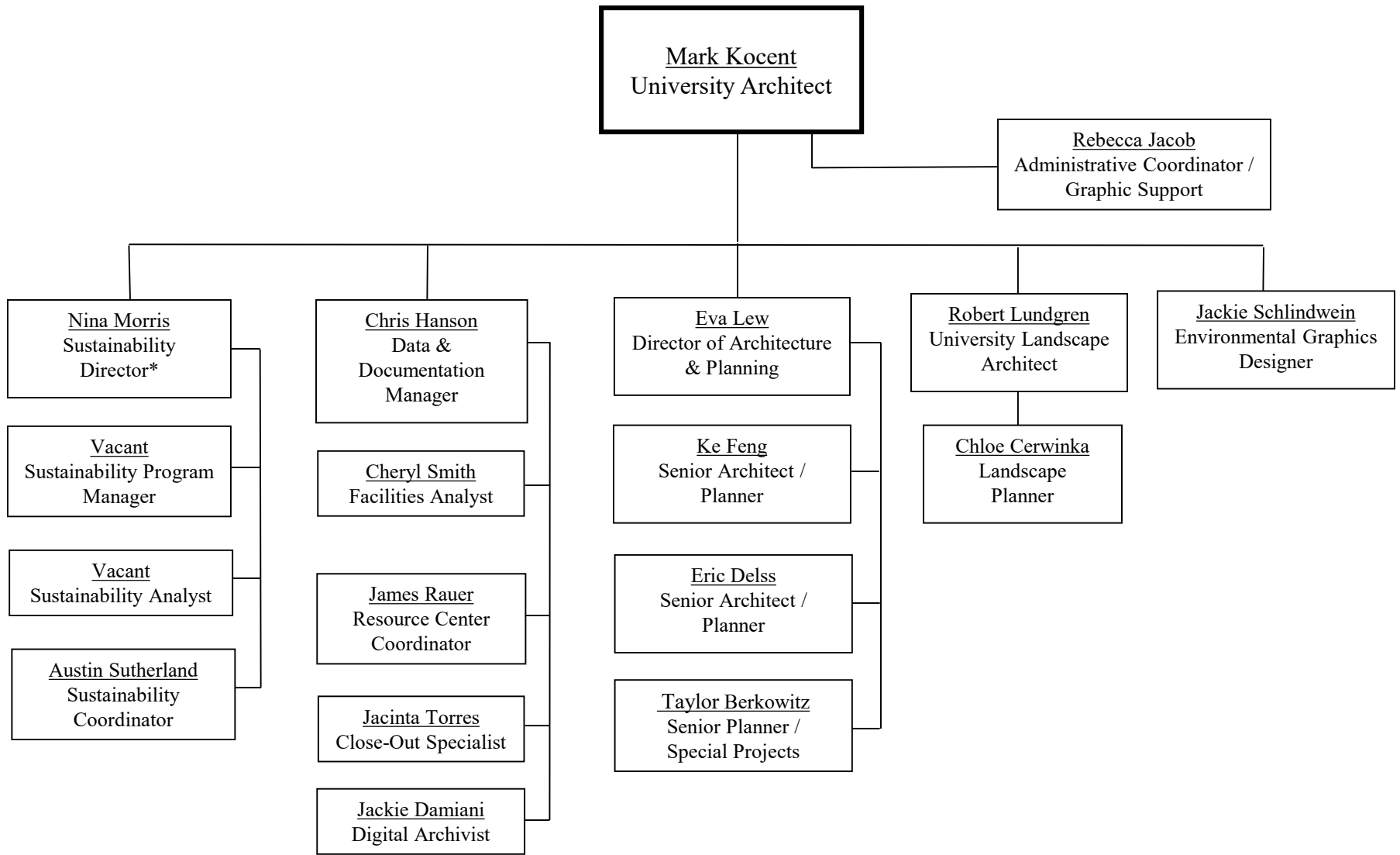


\*\* Assigned to support finances for Operations & Maintenance

\*\*\* Assigned to support finances for Design & Construction

\*\*\*\* Assigned to support finances for Real Estate Services

# Division of Facilities & Real Estate Services



\* Dual report to FRES SVP and UA